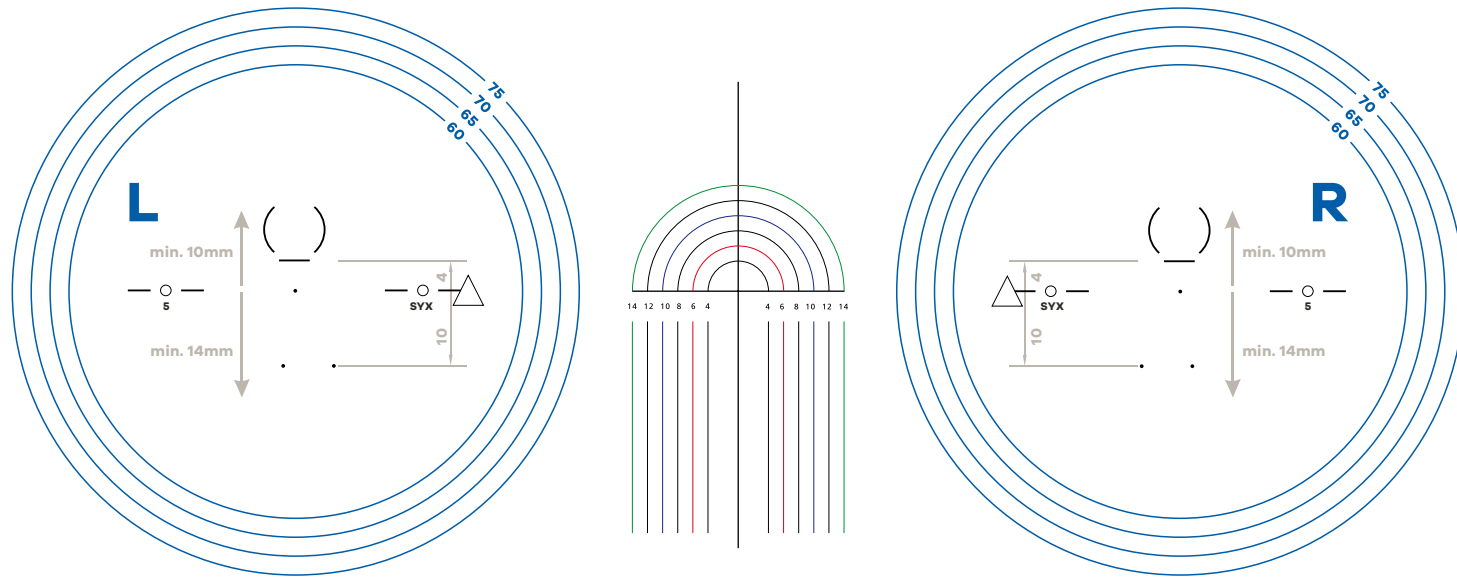


Centering: Center Sync III lenses according to the monocular distance PD and measure at pupil center when looking straight ahead in horizontal (zero) distance direction.

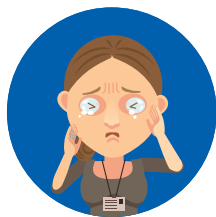


Required ordering data: Refracted prescription for distance and the choice of required support level Sync III 5, Sync III 9 or Sync III 13.

Sync III are enhanced, everyday single vision lenses; however, they should be blocked and finished similar to progressive lenses.

Materials	1 = 1.50	X = 1.53	P = 1.59	3 = 1.60	5 = 1.67
SY = Sync III	5, 9 or 13 = Powerboost		5 = +0.57D	9 = +0.95D	13 = +1.32D

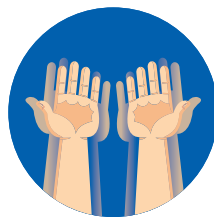
The power boost helps alleviate Digital Eye Strain (DES) and associated symptoms such as:



Tired Eyes



Headaches



Blurred Vision



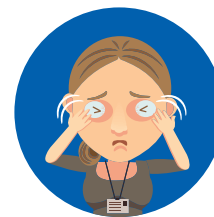
Dry Eyes



Light Sensitivity



Poor Night Vision



Irritated Eyes