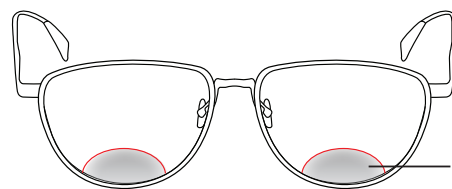
	Technologies Product Classification: EVERYDAY > SV	Marking: RLX RLX5 RLX8
	Minimum Fitting Heights: 14mm	

An advanced single vision lens available in three variants precisely personalized to the visual requirements of the individual eyeglass wearer, and featuring an extra bit of power in its lower surface area for added visual comfort in the 15- to 27-inches digital display viewing zones. Shamir **Relax™** provides single vision eyeglass wearers – including those not specifically requiring corrective lenses – with a bit of extra power in its lower area. The lens makes close and intermediate viewing tasks easier, and specifically helps overcome the vision and constant focusing challenges typical to continuous use of digital displays.

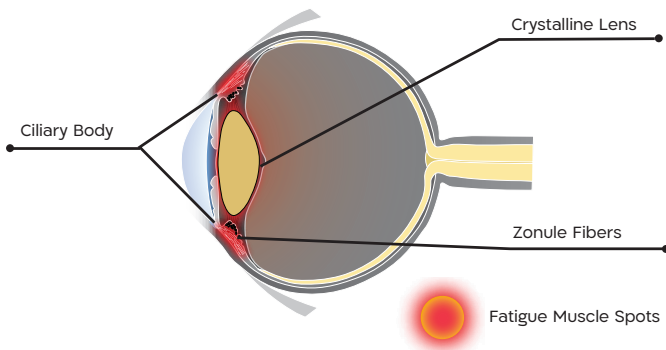
As its name implies, Shamir **Relax™** provides relief and helps eyeglass wearers do exactly that – relax, and enjoy greatly minimized eye dryness and fatigue, tearing, headaches and blurry vision at the end of long days in front of computer and digital device screens.

Conquer Fatigue By Adding Energy To Your Day.

Shamir **Relax™** has a gentle increase in power in the lower part of the lens; it's a small enough amount to allow for clear distance vision, and just enough power to relieve eye strain. Because the power is so slight, Shamir **Relax™** is the perfect replacement for your patients standard single vision lenses. By utilizing Shamir **Relax™**, your patients lens accommodations will be reduced by up to 30%. This single vision lens provides your patients a fatigue relief solution without distortion or swim, all wrapped up in a **Freeform®** design.



Shamir **Relax™** provides the perfect amount of power to ease eye strain.



Who It's For

Eyeglass wearers requiring clear vision and dedicated support for frequent use of personal computers.

Shamir's new **Relax™** lenses will feature two new powers, that will provide a customized lens for any single vision wearer. The new **Relax™** is highly recommended for anyone, with or without binocular vision issues, who experience eyestrain or end-of-day eye fatigue.

Technologies



EyePoint Technology®

By analyzing data from over 3,600 points on each lens Shamir is able to create lenses that offer patients a more accurate and comfortable visual experience.

How To Fit & Order Shamir Relax®

Provide the following information:

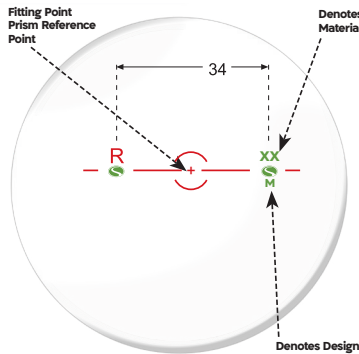
- Patient Rx
- Fitting Height
- Monocular Distance PD
- Frame Measurements A/B/DBL & ED

*It is strongly recommended that you provide all of the above mentioned measurements.

Features & Benefits

- High personalization, with lenses customized to eyeglass wearers' visual requirements
- The broadest possible fields of clear vision
- Unprecedented support for comfortable digital handheld device and computer viewing
- Greatly reduced eye strain and fatigue

Technical Information



Version	M Invisible Marking (see diagram)
Relax™ 65	RLX
Relax™ 50	RLX5
Relax™ 80	RLX8

Ink Marking: Red • Invisible Marking: Green

Availability:

Material	Prescription Range [D]	Cylinder
1.50 Hard Resin (C,T,V,T,P,TX,D,S)	-14.00 to +6.25	to -6.0 [D]
1.53 Trivex™ (C,T,V,T,P,TX,N,BZ,S)	-14.00 to +8.00	to -6.5 [D]
1.56 (B)	-14.00 to +8.50	to -6.75 [D]
1.59 Polycarbonate (C,T,V,T,B,P,TX,D,BZ,S)	-14.00 to +8.75	to -7.0 [D]
1.60 (C,T,P,TX)	-14.00 to +8.75	to -7.0 [D]
1.67 (C,T,P,TX,BZ,S)	-16.75 to +16.00	to -8.0 [D]
1.74 (C,T)	-20.00 to +13.50	to -9.00 [D]

LEGEND:

- **C** - Clear
- **TX** - Transitions® XTRActive™
- **BZ** - Blue Zero™
- **TV** - Transitions® Vantage™
- **B** - BluTech (Indoor & Outdoor)
- **S** - SunSync®
- **T** - Transitions®
- **D** - Drivewear®
- **P** - Polarized
- **N** - NXT™

POWER RANGE IS DETERMINED BY SHAMIR CERTIFIED BLANK RANGE PRISM TO 10 DIOPTERS IN EACH QUADRANT

⚠ WARNING: Polycarbonate lenses can expose you to chemicals including Bisphenol A (BPA) and 1.74 index lenses can expose you to Methimazole, which are known to the State of California to cause birth defects or other reproductive harm. For more information go to: www.P65Warnings.ca.gov.



SHAMIRLENS.COM 877.514.8330

TECHNICAL INQUIRIES 888.370.0736